

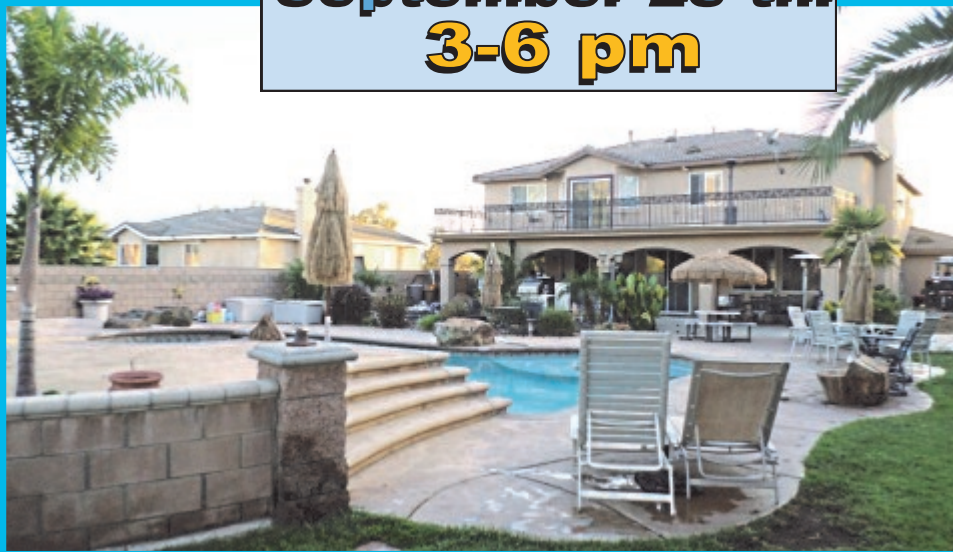
The Inland Koi Connection



**THE OFFICIAL
NEWSLETTER
OF IKS
ISSUE 216
SEPTEMBER
2014**



**Sunday
September 28 th.
3-6 pm**



**General
Meeting
& Potluck
at the home of
Richard &
Dee Dee
Henry**

**1563 Dodge Way
Norco, CA 92860
(951) 453-4810**





Greetings,

Our August meeting was held at the home of Miguel, Kelly and Ricky Sierra. Unfortunately, I was unable to attend, but was told that everything well. This was due to the hospitality of the Sierra family and the running of the meeting by our very able body Vice President, Rob Fales.

This was Rob's first time at this, and I'm told he did a splendid job. Thank you very much for stepping in, and conducting such an interesting meeting. You are definitely president material.

In September, our meeting will be held at the home of Richard and Dee Dee Henry. This will be the first time the Henrys have hosted a meeting, and we really appreciate them for undertaking this endeavor. The topic of discussion, by our speaker, will be on the best time to buy koi and how to pick them.

Our last meeting of the year will be our annual Thanksgiving meeting at the home of Jerry and Pat Mall. This has always been and will always be a great meeting location. We will also be having our board of directors meeting in November. I really encourage you to get more involved and join the board. If you are interested, please contact me.

The AKCA Organization has put out a new and beautiful koi ID poster. If purchased in groups of five, they can be purchased at the price of \$5.95 a piece, as opposed to the regular price of \$7.95. As soon as we can find someone to coordinate this project, we will get the information out to you.

Enoch "Mac" McClain, IKS Pres.

Thought of the month: "If you think you can, you can. If you think you can't, you're right." - Mary Kay Ash

MONTHLY PLANNING CALENDAR 2014

REGULAR MTG 4th Sunday	HOSTS & City	PROPOSED PROGRAM	BOARD Wed. after Mtg.
September 28	Richard & Dee Dee Henry - Norco	Best time to buy koi and how to pick them	October 1
October 26	Audrey Rowland-Riverside	Panel of IKS Experts will answer your questions	October 29
November 23	Jerry & Pat Mall-Temecula	Holiday Banquet- new officer nominations	December 3
January 25	Edward Dean Museum - Cherry Valley	First Meeting of 2015 new board member induction and awards.	January 28

A new feature starting next month will be an article about a product you use to improve your koi pond environment. In October we'll discuss various Pond Vacuums (specifically OASE PondOVac 4) and what they do, how to use them, etc. If you have experience using one, please contact Pete Miles so we can include your experiences with pond vacuums in the article.



Board of Directors

President:

Mac McClain
(909) 225-2346
MacMcClain@inlandkoi society.org

VICE PRESIDENT:

ROB FALES
(951) 279-0181
Rob_fales@inlandkoi society.org

SECRETARY:

PEGGY MILFELD
(951) 780-7395
PeggyMilfeld@inlandkoi society.org

Treasurer:

Sandy Hanson
(951) 682-3107
SandyHanson@inlandkoi society.org

NEWSLETTER EDITOR:

PETE MILES
(760) 705-5800
PeteMiles@cox.net

DIRECTOR:

POSITION OPEN

DIRECTOR:

DENNIS LYNAUGH
(951) 780-0123
DennisLynough@inlandkoi society.org

DIRECTOR:

ED KUSHNER
(951) 520-0092
EdKushner@inlandkoi society.org

DIRECTOR:

MARK KRAKOWER
(951) 371-2223
MarkKrakower@inlandkoi society.org

DIRECTOR:

RANDY MCGARVEY
(909) 534-5776
randymcgarvey@verizon.net

DIRECTOR:

POSITION OPEN

DIRECTOR:

TOM WRIGHT
(951) 990-5479
TomWright@inlandkoi society.org

Inside This Issue

• Oval Pond • Board Members • Help Line • Planning Calendar	2
• Host Profile: Richard and DeeDee Henry in Norco	3
• Water Quality test procedures and kits • Koi Organisation International	4
• August Meeting report: The Sierras	5
• August Meeting photos; IKS Banner • KrakTronix Technical Services	6
• IKS Library link • My Country Pond • Laguna Koi Ponds • Harrison's Koi Farm • Printing Connection • L & E Solutions	7
• Ha Feng KoiFood • Aqua Delight Freeze Dried Shrimp	8
• Settling Chambers • Member Vacation photos - Pond Visits	9
• Pull Tabs for Ronald McDonald House • Inland Koi Store	10
• Coming Events • Central California Koi Society Show • Helpful Links	11
• Richard & Dee Dee Henry's yard Photos	12

~HELP LINE~

REFERENCES

• INFORMATION:	JACK MARRIN	(909) 792-3603
• KOI HEALTH:	TOM WRIGHT	(951) 990-5479
• LIBRARIAN: Books, Videos	AUDREY ROWLAND	(951) 233-3671
• MEETING SITES:	PETE MILES	(760) 705-5800
• MEMBERSHIP:	ROB FALES	(951) 279-0181
• NEWSLETTER ADS:	PETE MILES	(760) 705-5800
• AKCA REPRESENTATIVE:	MAC MCCLAIN	(909) 225-2346

Our September meeting will be hosted by Richard and Dee Dee Henry, who joined our club in April of 2012. They've been in their home for about 13 years and enjoy living in Norco because it's basically a horse property area with big lots and open spaces. Their 2 story house sits on half an acre as you'll see when you look at their yard. Richard made good use of the space, by building a parking area for his RV and dirt racer, a basketball court, a swimming pool, a koi pond, a terraced yard and some very nice landscaping

Their koi pond is about 9 years old and was built by the same guy who did their swimming pool. Four and a half feet deep at the center and holds about 5000 gallons. It's a concrete (rebar reinforced) pond coated with Thoroseal. Richard says he has some water quality issues and is working on a long term solution of installing a WLim settlement chamber with vortex Microstrainer hoping that it will solve the problem. He showed me his open pit where the Lim settlement chamber is going in and of course the pit will have block wall sides and a concrete base to stabilize this prefilter. The stand, which should be added to support the WLim settlement chamber, can be adapted to hold a gate valve which can drain and flush the settlement chamber. This eliminates the need to try to squeeze a solids removing pump alongside the Microstrainer to the bottom of the chamber to pump out the debris that settles there. The valve and nearby sump chamber can be a real effort and time saver allowing you to direct where the nitrate rich water to plants and trees in your yard.

For now though, he's working on cleaning up the murkiness in the pond by using CrystalClear® One-Fix water clarifier that Mac McClain introduced to all of us at the club general meeting he hosted at his home back in March. He purchased it from Inland Koi as have some of our other club members who swear by its effectiveness. His main pond filter is a Nexus 210 Easy and he uses additional Savio filtration at the waterfalls, and a has Savio skimmer to trap leaves and dirt.

His pond is completely covered with netting purchased from Mystic Koi, and is there because the blue herons and egrets who reside at a nearby golf course like to drop by for the buffet. Richard says he was losing fish prior to getting the netting but now the birds are out of luck and have to look elsewhere for a meal. He also has some water hyacinths he added to protect the Koi and those are the ones he got from our fellow member Armand Blais when Richard attended the July meeting. Richard likes look of hyacinths and the color they add to the pond. He hates the netting but it's worth the protection provides.

While we were talking I explained what had happened to Armand Blais who hosted our July club meeting, and Richard suggested we get him on the phone to wish him well. The Henrys have hearts of gold, a great sense of humor and welcome everybody graciously. This comradery is typical in our club, so the Henrys fit right in.

They are active people who belong to three clubs so they need to divide their attendance and time between the three: an RV club, a dirt riding club and the thankfully, the Inland Koi Society.

You can see from the photos that Richard is serious about all three with a big investment in each and he

loves all three. They travel in the summer and just got back from Kansas. Both he and Dee Dee are born and raised Californians. They're planning a trip to the Detroit area and Canada were Richard has family and friends.



Richard has quite a story to tell about his grandmother, who lived in Canada, and her generosity. Maybe that's where he gets his generous spirit from? You'll see that when you have a chance to talk with him and Dee Dee.

They have three children, aged 24, 26 and 30 and a granddaughter. Married for 35 years, their romance blossomed when he and Dee Dee were only 15 and met in high school. You can tell from how they relate to each other that they have a real partnership and are still very much in love.

Richard works for the Riverside College Police District and his prior career also was in law enforcement with the Los Angeles Police Department. Dee Dee works for the city of Los Angeles in the permit department. Her job is to take the complaint calls between two neighbors who are upset with each other because one has encroached on the other's property, is annoying their neighbor or has built something they shouldn't have. Dee Dee will go out and interview the parties involved and either issue a citation or simply suggest how they can resolve things in a quick manner (according to the city ordinances of course).

Richard and Dee Dee have a couple of treats in store for us and he plans on showing off his cooking skills and outdoor kitchen so plan on summer "picnic type" entrée from him. Bring your side dishes, desserts, chicken, pizza whatever and usual potluck items and oh yes, your chairs. *Pete Miles*

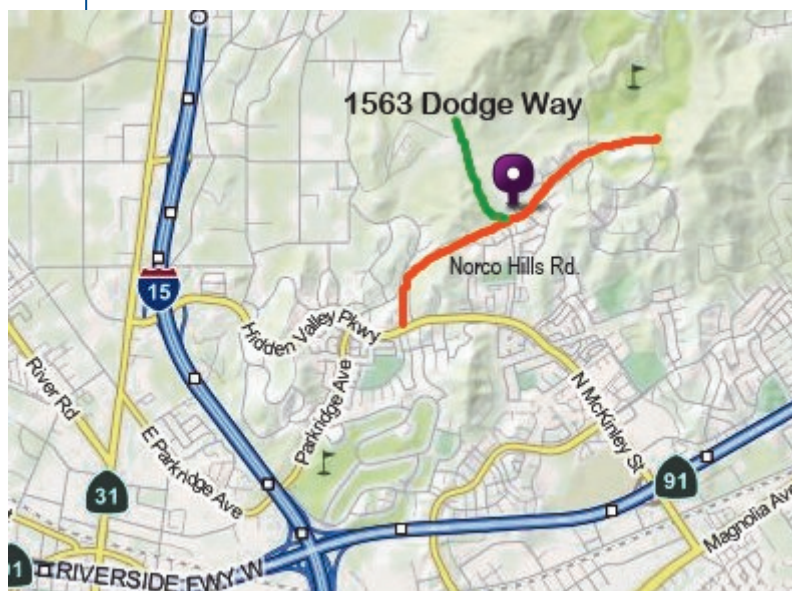
DIRECTIONS:

»EXIT FWY 91 AT N. MCKINLEY

Turn **RIGHT** onto Parkview Dr.
Turn **RIGHT** onto Norco Hills Rd.
Turn **LEFT** onto Dodge Way and go to 1563 Dodge Way

OR FROM I-15 FWY.

Exit at Hidden Valley Pkwy.
Turn **LEFT** onto Norco Hills Rd.
Turn **LEFT** onto Dodge Way



Pond Test Kits; Why and How to use them



Some of this content from Drs. Foster & Smith website, and from Ron Lawton of the Koi Club of Florida, and some from Simi Koi.

Why Test for pH?

pH is the measure of acidity or alkalinity in water. A pH reading of 7.0 is neutral, a pH higher than 7.0 is alkaline and a pH lower

than 7.0 is acidic.

A healthy koi pond depends on proper pH balance. Many factors exist to significantly alter pond water pH, creating an unhealthy environment for pond life. Acid rain, minerals leaching from soil or rain runoff, decomposing plants and animal waste can all contribute to unstable pH levels in a pond. Acceptable pH ranges are between 6.8 and 7.6. Extreme pH levels above 7.6 or below 6.8 should be avoided. Use of pH-reducing or -increasing pond products, or those that contain barley, and regular pond maintenance will help to eliminate the stressful pH fluctuations.

Why Test for Ammonia?

Ammonia is a toxic waste excreted into the pond by fish, birds, and other pond life. The natural process that controls ammonia in the pond is called the biological filter.

A healthy pond has no detectable ammonia. To get a healthy pond, the bio filter needs to be established. One thing that can fool those who check pond levels is that the dropper-based kits (shown above) used by most of us read *total ammonia* and do not read *thru bound ammonia* (known as ammonium) to give us accurate, free-ammonia-only readings. Instead we get FALSE readings, where the ammonia seems too high, almost lethal, yet the nitrites and nitrates read low.

Typical testing kits (Salicylate- or Nessler-based) determine total ammonia by raising the pH of the test solution to 12 or greater. At this high pH, all ammonia removal products will breakdown and re-release the ammonia, thus giving you a false ammonia reading.

Free ammonia (NH_3) is the toxic form of ammonia (vs. non-toxic ionized Ammonia NH_4^+) and thus it is much more important to keep an eye on the level of free ammonia in your system. The "Ammonia Alert" card might be the only tool on the market that can read levels of free ammonia while using ammonia removal products such as Prime™, AmGuard™, AmQuel®, ChlorAm-X and other dechlorinating/ammonia-removal products.

Why Test for Kh?

Carbonate Hardness = Total Alkalinity. Test the Kh of the tap or well water. Test the Kh of the pond. Make comparisons over a few days to establish your Kh average. Kh is the buffering ability of your water to hold the Ph at a safe level. Kh should test no less than 100. In the event of low Kh readings baking soda works exceedingly well to maintain proper levels, and can be added without fear of harming the fish. In addition crushed oyster shells or crushed coral can be bagged and placed in filters or in water current areas to buffer the water on a long term basis. If you have a bead filter you need to maintain a high Kh. Baking soda or pre-made tiny Dixie cups of plaster of Paris can raise the Kh quickly, when needed, as indicated by your testing.



Why Test for Nitrite and Nitrate?

Our koi release solid waste into the pond water. This waste is turned into toxic ammonia. Nitrifying bacteria in the pond convert toxic ammonia to nitrite (also toxic). Even a low level of nitrite can cause severe stress on pond fish, leading to disease outbreaks and fish death. Nitrite toxicity affects the koi blood's ability to carry oxygen throughout the body, leading to suffocation.

Nitrate levels increase over time in established tanks as the end result of the nitrogen cycle.

(The only exception to this rule is heavily-planted ponds, which MAY be able to consume nitrogen faster than it is produced.)

Because nitrates become toxic at high concentrations, they must be removed periodically through water changes.



Conclusion – test for all 5.

IKS has joined KOI – What does that mean for our members?

By Spike Cover

At the last club meeting, I gave a short presentation telling the group that our Board had decided IKS should join Koi Organisation International (KOI). IKS was KOI's first member club after that org only recently made club memberships available. My presentation told about the benefits to IKS of their membership. Those benefits include:

- Access to Group Buys at Member prices. This means that IKS members may take advantage of purchases made by KOI that result in prices for meds and other things at prices typically significantly lower than retail.
- KOI Guide - & Supplement (s) – more on these later
- Group Courses at HALF PRICE for any \$25 course (minimum 6 students, no maximum)
- Group LAB at \$40 per Student (minimum 3 students, no maximum)

1 PRESENTATION to the club by a KOI instructor via Skype (using Skype 1-Day Pass)

More about the Guide and Supplements– available for loan from our club library

- The KOI Guide has info that none of us can remember, e.g., how many grams should we add to make a 2ppm solution (of say PP) in our ponds. And, it has this info reference form, i.e., a "bottom line" format.
 - o I showed an enlarged example of a Guide page that had medication and dosages taken and interpolated from Erik Johnson's *Koi Health and Disease, 2006 Reload.*"
 - o I passed around the Guide for members to review
- The KOI Guide has yearly supplements (last one scheduled for Oct. 1, 2015). The IKS will receive the KOI Guide and the first two Supplements with its club membership.

I (Spike Cover) will be the club's representative to KOI... until someone else wants to do it.

The KOI web site is at: www.KoiOrganisationInternational.org (thank goodness for bookmarks!). Check it out.



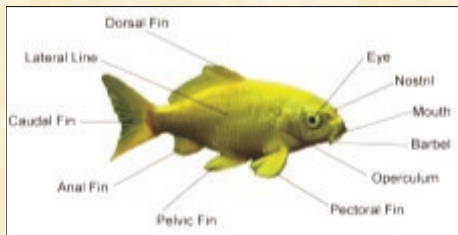
Mac was entertaining out-of-town guests this weekend, so Rob Fales got to be acting Prez for the day, welcoming all to **Miguel Sierra's** lovely home and backyard retreat. **Kelly** and young **Ricky** were off to a Scout meeting when we arrived, but returned soon enough that both got to mingle and chat with everyone.

Into the house went all the food, our usual feast covering the table, and all the desserts displayed around the counter. Not required, but it is so nice to be able to buffet inside away from pesky bugs! Outside, there was ample room to set up our 44 chairs and still move among them, plus room for the raffle table and tubs of four good-sized koi for a mini auction. There was lots of shade and a constant gentle breeze.

Getting down to business, Rob introduced our newest members, **Jim & Tess Poyle** of Banning, who came to visit and joined on the spot. They have no pond as yet, wanting info and help to do it right. (*I suggested they host a meeting and let the experts talk them through design and filtration...like an on-site seminar. Maybe...?*) Also recognized were a few long-time-no-see members: **Paul Atkiss, Jerry & Pat Mall**, and **Aiko Howo**, who has missed meetings due to illness. And there was a sad note from **Armand Blais**, our host just last month, who asks for prayers for his health: after six-way bypass surgery nine years ago, four arteries are completely blocked and repeat surgery seems not to be an option. Please pray for better second opinions or other options.

Until four years ago, Miguel had been content with aquariums and a 300-gallon preformed water garden and goldfish; but when he discovered koi — and the local predators — he dug deeper, to 4½ feet and 1500 gallons, about a tenth the size he really wanted. Besides being safer for his fish, the depth keeps the water temp more stable, which is healthier for them too. There are two pumps (one runs 24/7, the other part-time to increase aeration) and a 40-watt UV that he keeps shaded except for a couple of hours a day. His huge outdoor aquarium is used for goldfish and growing small koi before they go to the pond.

Even before **John Svelan** of KCSD took the mic, we knew we would have good technical training, this time on **Koi Anatomy**. After some brief history of carp-to-koi (*Aristotle listed carp among the world's animals in 384BC; Romans took them to the Danube River in Europe; Charlemagne encouraged farmers to keep carp ponds...*), he asked how many fins a koi has. Not a trick question, but did you count “7”? **Dorsal fin** (stabilization), **caudal fin** (tail, for forward swimming), **anal fin** (stabilization), **pelvic or ventral fins** (control pitch and roll), and **pectoral fins** (steering, slowing, counteract jet effect of water forced out of opercular openings — the gills).



Little did I know there's a fairly set number of scales on a koi. There should be six rows above the lateral line and six rows below, with 37 to 39 from the fill cover back to the tail. That's 444 to 468 scales, which show growth by adding rings to the scale, but these are not related to the koi's age as tree rings are. Lost scales can grow back, unless the injury includes significant damage to the *dermis*, the inner layer of the skin that includes nerves, blood vessels, and the 'follicles' of the scales; damage that deep could prevent regeneration. Working from the outside in, there is the *cuticle* or slime coat, a protective/reactive area full of immune cells/substances to reject infection; this layer is not replaceable, so extreme care in handling koi is important. Never pick up a koi with a towel; use bare hands

or vinyl gloves for “slimy on slimy.” Next are *scales* (you only see about 20% of each, like roofing shingles), then the elastic and continually regenerating *epidermis*, the *dermis*, and finally the *muscle layer*...

So much to know, just for basics! How about senses? Koi are very sensitive to sound and can be stressed to illness by constant noise. Their eyes are similar to ours but independently moveable, increasing their visual field, and yes, they see colors. In the water they don't need protective eyelids, so the eyes are more vulnerable to injury. Nostrils or *nares* appear as a pair of dots between the eyes and mouth; small U-tubes through which water flows, aided by ‘nose hairs’ or *cilia*, the *nares* are strictly for smelling (most pronounced on butterfly koi).

IKS is the first member of **Koi Organisation International** (K.O.I.), at the new *club level*, which will allow club members a number of benefits, including lower rates for individual membership and purchase discounts. **Spike Cover** promotes K.O.I. everywhere he goes. Understand that Spike wrote the Koi Health Advisor program (KHA) for the AKCA and ran it for years. Five years ago he joined a group of 25 koi enthusiasts from the international community who wanted to learn and teach more about koi; the result was this international, internet-based teaching and learning organization. Then he wrote and designed the K.O.I. Guide (“*All the important information you don't want to get wrong!*”) which comes with membership. Printed on waterproof paper for use around the pond, it includes annual supplements, the newest of which he announced today. You don't have to be a member to benefit from K.O.I., so check out the website and consider taking an on-line course, especially the *free* Beginners Course, K.O.I. 101 (Register at www.KoiOrganisationInternational.org, but you don't have to join.) [Got that, Jim & Tess?!]

Ed Kushner presented a few more fish for sale from the club quarantine tank, hoping to thin out the inventory in anticipation of the 2015 Auction. **Aiko Howo** bought three, an *Aka Sanke*, a *Matsuba*, and an *Orengi Ogon*, and we are looking to donate some to public ponds.

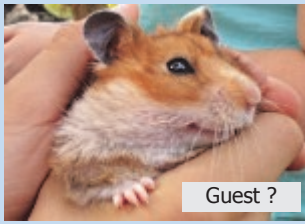
Reminders were given about openings on the Board of Directors, with a couple of offices opening up, too. A nominating committee will be working to present a full slate for the November elections, but it would be very helpful if we had some volunteers. If you like the club, have some ideas to make it better, think you might want to get more involved...please talk with someone on the Board or come to the next meeting. Check us out — we want to keep it fun for all!

Rob shifted gears towards the end of the meeting for the drawing and had **Ricky Sierra** draw the tickets. In addition to the great selection he and Deanna always provide, the supplier **Ultra Balance** donated reusable bags that held koi food and golf towels. Something new, something different; everyone enjoys the draw!

As we closed I marveled at how quickly the afternoon goes. The 3PM start was good, even though we had lots of shade. While cleaning up I noted there were a lot of last-minute seconds on desserts, and a lot of see-you-next-month conversations. That's the best part of the club: the fun we have together, the sharing of our common interest. See you again next month!

~ Peggy ~

August birthdays: **Leanne Thomas** (8/3), **Marg Hall** (8/5), **Deanna Fales** (8/6), **Rachel Hunter & Sabrina McClain** (8/9), **Orville Hanson & Nick Milfeld** (8/11), **Norma Marrin & Cecelia Maingot** (8/19), **Francine Hoffman** (8/20), and **Aiko Howo** (8/24). Wow! Happy Days!



Guest ?



Miguel our host



New members Jim & Tess



You talking to me?



koi anatomy presentation



koi teeth



Men at work ? Right!



Captivated audience



Rob presents John a thank you gift!



Our new club banner



Close to the plants




KrakTronix Technical Services

LASER PRINTER SERVICE
REMANUFACTURED TONER CARTRIDGES
ALL TONER / INK NEEDS
HP AUTHORIZED

MARK KRAKOWER

501 N. Smith Ave. • Suite 110 • Corona, CA 92880
(951) 735-9996 • (951) 2782849 Fax
email: kraktronix@sbcglobal.net • www.kraktronix.com



2 Koi Guys

Scott Zehm

Robert Walters

951 237-2508

● INSTALLATIONS ● PONDS ● FILTRATION
● DESIGN ● CONSTRUCTION ● MODIFICATIONS
● YOUR UV LAMP SOURCE ● LINER OR CONCRETE

~IKS Library & Video Tapes online~

Just go to our web-site <http://www.inlandkoiociety.org> and check on Resources. A menu will come down with two choices; "IKS Library" is the link you want to choose. IKS has a variety of books and videos that are available to our members, and you can reserve any book or video from the on-line Library just by contacting **Audrey Rowland at (951) 233-3671** and she'll bring your selection to the next general meeting.

KOI RESCUE: The IKS does koi rescue for those people who no longer want or can keep their koi. If you are interested in helping with the koi rescue, contact Ed Kushner our koi rescue coordinator, at 951-520-0092 edkushner@inlandkoiociety.org



20452 Laguna Canyon Rd.
Laguna Beach, CA. 92651

Hours of Operation:
Mon-Fri 9-5 Sat 9-5 Sun 10-5
949-494-5107

Since 1989, Laguna Koi has gone the extra mile to provide a full array of service. We hand pick 2000 koi of 16 varieties and stock them. For between \$25 and \$5000, you can get a koi of any color and any size. In addition, anything for your koi pond can be found here, including filters, pumps, aquatic water plants, supplies, food and free tips.

Ben Plonski bplonski@lagunakoi.com



my Country Pond
Water Lilies & Aquatic Plants
Koi•Goldfish•Snails
Catfish•Crawdads
Pond Themed Gifts
619.646.9980
www.mycountrypond.com

Jack Cords



20% Off For First Time Customers!

800.491.1964 • 951.351.9437

printingcolor@yahoo.com • www.printingconnection.net

11800 Sterling Ave., Suite E • Riverside, CA 92503

HARRISON'S

KOI FARM

POND KOI • SHOW QUALITY KOI
2000 KOI on display from 3" to 30"

Specializing in hard to find varieties

- KOI FOOD
 - SUPPLIES
 - EQUIPMENT
 - CONSULTATION
- (951) 369-9998



Terry & Koren Harrison
5580 / 5582 Rio Road
Riverside, CA 92509

**COMPUTER REPAIR
& SERVICE**

\$45
Per Hour
for Repairs

Special Service
Pkg. Available
(Commercial
& Residential)



L and E
Integrated Solutions

Linda Kushner
951-333-4147
lindakushner1@gmail.com

- Remove viruses & Malware
- Install security protection
- Maintain & manage computer via remote access
- Train you in Windows applications
- Backup and data recovery
- Will be your IT consultant
- Troubleshoot any hardware
- Cell phone apps installation & training
- Expert staff with over 30 years experience

\$500 OFF
Repairs

1st time customers
Valid coupon only • Not valid w/other offers



PROFESSIONAL QUALITY KOI FOOD

- DOES NOT CLOUD WATER
- EASY DIGESTION
- IMMUNE SUBSTANCE ADDED
- COLOR ENHANCING



ISO 9001:2000 REGISTERED (UKAS,ANAB)
YOUR QUALITY ASSURANCE

Aqua Delite[®]

FREEZE DRIED SHRIMPS &
FREEZE DRIED SILKWORM PUPAE



- HIGH IN PROTEIN AND NATURAL NUTRIENTS
- GOOD SUBSTITUTE FOR LIVE AND FROZEN FOOD
- FOR FRESH OR SALT WATER FISH



- HIGH IN PROTEIN FOR RAPID GROWTH
- BETTER SLIME PROTECTION
- HELPS TO RESIST BACTERIA AND PARASITES

DISTRIBUTED BY:
UP RIGHT TRADING CORP.
TEL: 626-579-0578
TOLL FREE: 877-424-3364
E-MAIL: sales@uprighttrading.com

© 2012 Up Right Trading Corp. All Right Reserved.

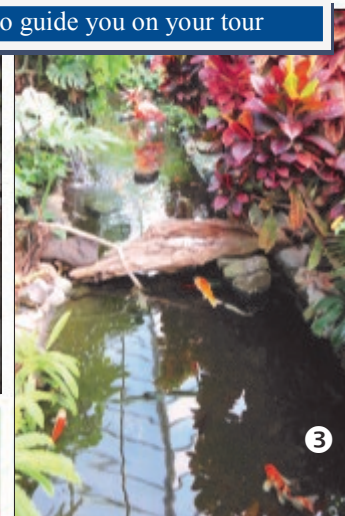
Many new hobbyists have trouble understanding the settling chamber without actually seeing one in action. Basically a settling chamber (often referred to as a SC) is like a skimmer, except instead of water flowing from the top of the koi pond, it flows from the bottom. An SC is purely a mechanical filter designed to remove solids before the water is sent to the biological filter. The reason for this is the pond's bio filter will be far more effective if it doesn't have to deal with all the solid waste.

The SC is placed near the koi pond and is an in ground container or tank of some shape. Most will be a cone or cylinder shape and use a vortex motion to aid in the settling. Water flows from the bottom of the koi pond, through a bottom drain, into the SC. The solid waste from the koi pond flows gently into the SC and settles at the bottom of the tank. A pump then pulls the cleaner water from the top of the SC and sends it to the bio filter. Usually a valve is placed at the bottom of the SC so you can simply open it and drain away the settled waste. However some settling chambers are buried flush with the ground and instead of a valve, a sump pump, or solids handling pump is used to clean out the SC.

The design of the SC can take many shapes. The most effective is the cone shape. This design has the water entering in at an angle so the water can spin in the tank. This increases the settling effect. One thing to keep in mind with a settling chamber is flow

rate. If the water flows through the SC too quickly, then the waste from the koi pond will not have time to settle out and it will simply pass right through the pump. The efficiency of the SC is all about dwell time. The longer the water dwells in the tank, the better the settling. As a general rule the SC needs to be 10% of the regular flow rate. So if you have a 4000 GPH pump, then your SC needs to be at least 400 gallons. That's a pretty big tank!

A better way to get around the giant settling chamber and still be effective is to use a Microscreen. There are several versions of the microscreen on the market today. Basically the water passes through a fine stainless steel mesh, usually 250 or 500 microns. The screen will clog quickly so various self cleaning systems have been developed. The most popular is the spray bar. The screen is designed like a round drum. Imagine a 5 gallon bucket and the walls of the bucket are the mesh. Water is pulled through a pipe in the middle of the drum. The pipe comes up through the bottom center of the drum and it spins on this pipe. Water after the pump is sent back to the center of the drum through small spray bars that constantly turn and spray the mesh clean. Using a self cleaning microscreen such as this can greatly increase the efficiency of a settling chamber. You can send much higher volumes of water through a smaller tank and the microscreen will prevent debris from passing through to the pump and filter. More info at <http://www.simikoi.com/subcat365.html>



Follow the numbers below to guide you on your tour

Leveretts, Marrins & Milfelds on August vacation:

- 1: The gardens at the Pacific Horticultural College at Horticultural Center of the Pacific, near Victoria B.C.
- 2: A visit with Wayne Etherington at West Coast Koi Farm, the outdoor display pond.
- 3: Victoria Butterfly Gardens.
- 4-5: Butchart Gardens, north of Victoria.
- 6: Japanese Garden, Hatley Castle, Royal Roads University, Victoria.
- 7: Japanese Garden at WA Park Arboretum, Seattle.

The Loma Linda Ronald McDonald House Pull Tabs: Support the LLRMH by participating in the Inland Koi Society Pull Tab Collection Program. Pull tabs are the aluminum tops from cans of soda and other beverages. The funds raised by this recycling are used to help support the day to day operations The **Ronald McDonald House** is our club's **Community Donation Project** started in 2006 by Chrisie Nobles. Please continue to save those tabs and bring them to a meeting so Peggy Milfeld or Debby Leverett can turn them in during May of 2015.



All proceeds benefit the
Loma Linda Ronald McDonald House

The Loma Linda Ronald McDonald House provides a "home away from home" for families of critically ill children who must travel far from home for medical treatment. Seven days a week, 365 days a year, the Ronald McDonald House allows families to stay together during times of medical crisis. Last year we had more than 1,100 families stay at our House.

INLAND KOI

Quality Japanese Koi
& Pond Supply



Importers of high quality
Japanese koi.
Complete line of koi &
pond supplies.

WE HAVE MOVED to our
new larger location at
18122 Mt. Washington Street
Fountain Valley, CA 92708

Our new facility is much bigger
than the previous one and we
have more products to serve
your koi needs better. Thank
you for your patronage over the
years and we look forward to
seeing you soon. **New Phone**

(714) 438-0087 and New Hours

Monday-Saturday 10:30 am - 6:00 pm
Sunday 10:30 am - 5:00 pm



Phone: (714) 438-0087

Email: inlandkoi@inlandkoi.com

THE BEST QUALITY
Japanese Koi
AT A REASONABLE PRICE!



Previous KOI USA Article index <http://www.koiusa.com/article-index/>

Helpful Links You Can Use

- **AKCA Website** <http://www.akca.org/>
- **KoiClub of San Diego** www.koiclubofsandiego.org
- **Nishiki KoiClub** <http://www.nishikikoiclub.com/>
- **So Cal KoiClub**
www.akca.org/akca-koi-clubs/california/so-cal-koi-club/
- **Bakersfield Koi & Watergarden Society**
<http://www.bkwgs.com/index.html>
- **Inland KoiStore** www.inlandkoi.com/info.html
- **Harrison's KoiFarm** 951-369-9998
- **Mystic Koi** <http://www.mystickoi.com/>


2014

Coming Events

S E P T E M B E R	8-29-9-28	L.A. COUNTY FAIR ~ 92nd Anniversary. Fairplex Pomona www.lacountyfair.com
	9-1-12-1	FALL APPLE HARVEST ~ Oak Glen. Growers sell apples, cider & pies. Plus U-pick apples & berries, picnicking, entertainment. oakglen.net
	13 To 10-25	BIG BEAR OCTOBERFEST ~ German food, beer, music, dancing, contests. Big Bear Convention Center 42900 Big Bear Blvd., Big Bear Lake - (909) 585-3000 - http://www.bigbear.com/things-to-do/special-events/oktoberfest/
	19-20	RIVERSIDE MARIACHI FESTIVAL ~ Fairmont Park - 2601 Fairmont Blvd., Riverside - Fri. 6-9pm / Sat. 9am-9pm. \$20
	28	INLAND KOI SOCIETY MEETING & POTLUCK ~ 3:00-6:00 pm. Hosts - Richard and Dee Dee Henry - Norco 951-453-4810
	10-1	IKS BUSINESS MEETING ~ 7pm / All members of IKS welcome! — 6531 Box Springs Blvd, Riverside / Mac McClain / (909) 225-2346
	26-28	OKTOBERFEST - BEAUMONT ~ Food, arts, crafts, games, contests, Weiner dog races ~ Noble Creek Community Park (951) 854-9555 www.bcvparks.com
	28	FIREBALL RUN ~ 12 noon - 6pm / Finish line extravaganza. End of 8-day, 2500-mile, 14-city Adventurallly and race. Food, entertainment, music, movies, car show www.riversidefireball.com
	27-28	35TH ANNUAL CCKS KOI SHOW ~ Open to any koi hobbyist interested in showing; all are cordially invited. Central California Koi Society of Fresno, 5832 E. Erin, Fresno 93727 (559) 970-8508 www.cencalkoi.com
O C T O B E R	13	COLUMBUS DAY ~ Christopher Columbus' arrival to the Americas on October 12, 1492
	19-	PELTZER FARM PUMPKIN PATCH ~ Temecula / 9 am - 8 pm / Website: http://peltzerfarms.com/
	13	COLUMBUS DAY ~ Christopher Columbus' arrival to the Americas on October 12, 1492
	19	FALLBROOK HARVEST FAIRE ~ Over 150 scarecrows dot the town and a fun-filled event celebrates. Food, games, pony rides, petting zoo, crafts, music, hayrides, pumpkin contest - (760) 728-5845
	26	INLAND KOI SOCIETY MEETING & POTLUCK ~ 2:00-5:00 pm. Host - Audrey Rowland in Riverside For more info call Audrey (951) 233-3671
	29	IKS BUSINESS MEETING ~ 7pm / All members of IKS welcome! — 6531 Box Springs Blvd, Riverside / Mac McClain / (909) 225-2346

BUSINESS CARD	\$100 / year
QUARTER-PAGE DISPLAY	\$140 / year
HALF-PAGE DISPLAY	\$275 / year
FULL-PAGE DISPLAY	\$550 / year

Approximately 75 copies of the Inland Koi Connection are printed and mailed ELEVEN times yearly. For more information call Pete Miles IKS Newsletter Editor, (760) 705-5800



Central California Koi Society


36th Annual Koi Show



SATURDAY AND SUNDAY Sept. 27 th. & 28th, 2014

FIG GARDEN VILLAGE 5082 Palm Ave, Fresno CA


Grand Champion 2013




KOI SHOW CHAIRPERSON:
Rosimeri Tran Ph# 559-970-8508
Email: cencalkoi@gmail.com

Saturday, Sept 27: 9am-3p.m (Judging starts at 9am)

Sunday, Sept 28: 9am-3p.m





INLAND KOI SOCIETY
5198 ARLINGTON AVE., #146
RIVERSIDE, CA 92504
Return Service Requested

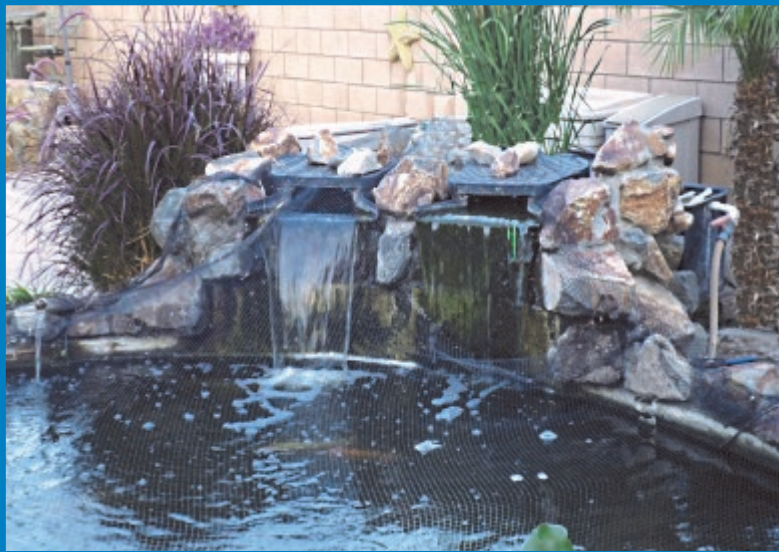
Why not host a club meeting in 2015?

All you need is a koi pond, some space in your yard to hold 45-60 people and your friendly smile.

Remember from our 2014 pond tour that no pond is too small.

Contact Rob Fales
at (951) 279-0181

or Rob_fales@inlandkoiociety.org



Visit our website: www.inlandkoiociety.org