

The Inland Koi Connection



THE OFFICIAL
NEWSLETTER
OF IKS
ISSUE 326
JUNE 2026

SUNDAY 6/28/26

WWW.INLANDKOISOCIETY.ORG

IKS POTLUCK MEETING

2:00 PM

SUNDAY, JUNE 28TH

HOST: BARBARA MATHEWS

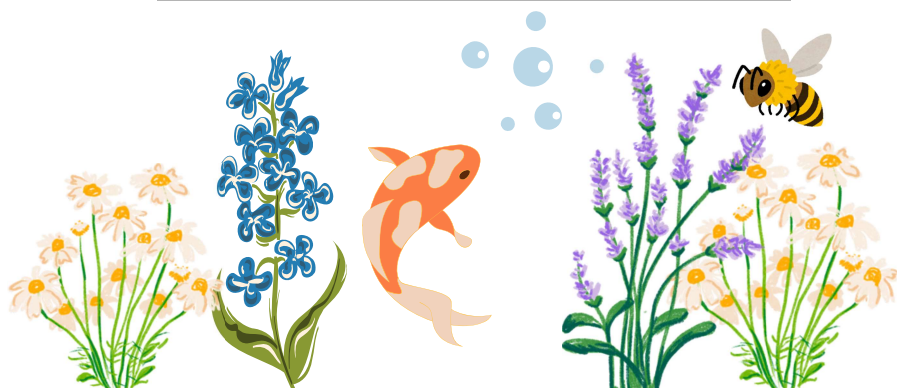
17700 CONESTOGA RD,
LAKE MATHEWS, CA 92570

BRING FOOD AND CHAIRS!!!



Find us on Facebook!

Simply search **Inland Koi Society**, and our page should be the first result that appears. Follow us to stay updated on meetings, events, and the latest news from the club.



For our **June** meeting, we are going to take a trip over to **Lake Mathews** where we will be visiting a lovely member of IKS, **Barbara Mathews**. Barbara is excited to be hosting a meeting for the second time at her beautiful home! She claims that her pond could be considered ordinary compared to so many other members' ponds, but it gives her great joy, nevertheless!

The pond was already in place when they bought the house in 1995 - and it was definitely a selling point. It even came stocked with several very friendly koi! Although they had no idea what they were doing, they kept running the pond mostly through trial and error, which resulted in a beautiful outcome! The previous original owner built it himself not long after the house was built in 1978. Between the main pond and the lower pond, they hold approximately 2,970 gal. There is no external filtration system, but what Barbara has come to learn is that it's a bog system, but it has worked pretty well over the years with a few hiccups here and there. Barbara currently has 6 koi with 2 recently acquired red-eared slider turtles and quite a few mosquito fish.



Her home is on a 1.25 acre lot in a semi rural area. There is a barn on the property where they used to have horses and she still has a chicken pen with 8 chickens that provide fresh eggs; when they feel properly motivated. She also has one elderly dog and 3 cats to keep her company! Since Conestoga road is a cul de sac, and we invite club members to park in the driveway or perpendicular to the road edge so we can fit more cars. Please note that on Google maps the street is incorrectly listed as Wyler Road. You want to come in on Cowan Road off Cajalco, turn right on Green Acres and follow the curve to Conestoga/Wyler and turn right, the home is 100 yards in at the end of the street.



Find us on Facebook!

Simply search **Inland Koi Society**, and our page should be the first result that appears. Follow us to stay updated on meetings, events, and the latest news from the club.





2025 Board of Directors

Officers

- President – N/A
- Vice President – N/A
- Secretary – N/A
- Treasurer –

Nick Milfeld ~ c 951.892.4269
Nick Milfeld- milfeld@msn.com

- Newsletter Editor –

Braelynn Zoetemelk ~ c 951.529.3328
braellama@gmail.com

Directors

- **Gavin Alexander** ~ 951.922.5868
gamial@aol.com
- **Tony Coby** ~ 951.486.1816
Jazzman19@gmail.com
- **Deanna Fales** ~ 951.279.0181
rob_fales@sbcglobal.net
- **Rob Fales** ~ 951.279.0181
rob_fales@sbcglobal.net
- **Larry Leverett** ~ 951.500.2157
ldlever@earthlink.net
- **Barbara Mathews** ~ 951.316.0263
reedbenderbarbara@msn.com
- **Scott Zehm** ~ 951.237.2508
scottzehm@eee.org

Upcoming Events

06

28 ~ IKS Board Meeting
12:30 PM

Barbra Mathews

17700 Conestoga Road, Lake Mathews 92570
Interested members are welcome to attend, but please call hosts to let them know beforehand, 951.961.9008

06

28~ IKS General / Potluck meeting
2- 5 PM

Barbara Mathews

17700 Conestoga Road, Lake Mathews 92570

07

26 ~ IKS Board Meeting
12:30 PM

Wally Yosafi

3740 Deerlodge Circle
Corona 92881

Interested members are welcome to attend, but please call hosts to let them know beforehand

07

26~ IKS General / Potluck meeting
2- 5 PM

Wally Yosafi

3740 Deerlodge Circle
Corona 92881

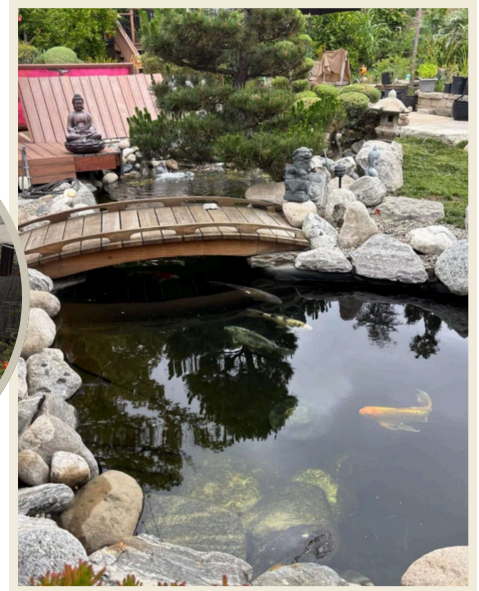
08

SUMMER SIESTA
No August meeting!

WWW.INLANDKOISOCIETY.ORG

May Meeting Recap!

If you did not attend the May meeting at Aiko's home, **here's what you missed!**



We hope to see you all at the next meeting!

While our May meeting at Aiko's home had a smaller turnout than expected, those in attendance enjoyed a wonderful afternoon of fellowship, discussion, and appreciation for the hobby we all share. A sincere thank you to Aiko for her hospitality and everyone who came out and helped make the gathering both enjoyable and memorable.



You may be featured on our Facebook page! If you prefer not to have your photo or information shared online, please fill out an opt-out form and let us know.



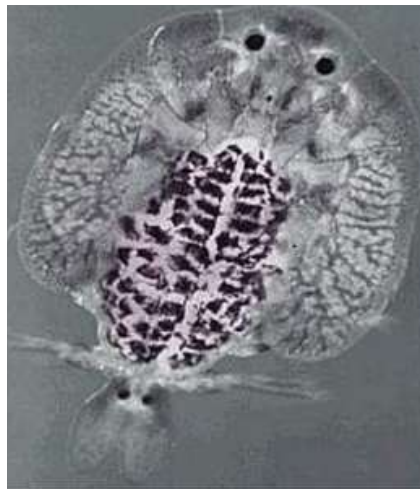
Koi Macro Parasites and Treatment

By Mike Anger

Most infections of Koi are microscopic, or invisible to the naked eye. In addition, most require an immunocompromised host, which is a fish whose immune system is weakened to attack. An exception to both of these “rules” are the crustacean parasites including argulus foliaceus or fish lice, and lernea .cyprinacea or anchor worms

Fish Lice are oval, flattened creatures with two eyes, two sucking discs right below the eyes to hold onto the fish, ten legs and a stylet mouthpiece that repeatedly pierces the Koi to feed on tissue fluids and release toxic substances (it sort of reminds me of an ex-girlfriend I once dated). The adult female louse will lay its eggs (up to about 500) in a thin strip on the surface of rocks or the banks of a pond. When the female is ready to lay her eggs, she will drop off the Koi, swim to the pond bottom and lay them in rocks or plants. She will attach her eggs in a mucus coating to protect them and secure them to her chosen site. They may take up to eight weeks to hatch and must then attach to a fish within about three days, but can swim between fish after feeding. They are mature after about six weeks. They can grow up to one centimeter in length. In the process of feeding on Koi, they cause much irritation and will result in quite a bit of flashing. The biggest problem they cause is opening a path thru the slime coat that allows the introduction of bacteria and the development of bacterial ulcer disease.

They are easily treated with a specific chemical designed for use with Koi called ProForm LA, by Koi Care Kennel. Follow the package directions.



Argulus

Anchor worms have a free swimming larval stage. When mature, the adult male will mate with a female and then die. The fertilized female develops an anchor shaped head which imbeds in the skin, under the scale of Koi. The site of attachment opens a portal of entry for bacteria. The female worm then develops two large egg sacs which may contain hundreds of eggs each. These sacs are shed when the eggs are ready to hatch; the female will then develop new sacs. The female will remain attached until it dies. It may reach a length of up to four centimeters. The treatment is to catch the Koi and remove the anchor worm with a tweezers, being careful to remove the entire anterior (anchor) end. The wound can then be cleaned with a disinfectant such as betadine. They are easily killed with ProForm LA, by Koi Care Kennel. Follow the package directions.

June 2026



Nominate Someone in Your Club For the Spike Cover Award!

Lifetime Achievement Award for Excellence
in the Koi Hobby!

Is there someone in your club who
has demonstrated dedication and
long-term commitment to the hobby?

• Send a paragraph to pattist@snet.net
explaining why you feel the person is
qualified – THAT'S IT!

Nominations due by September 1.

Learn more and see our previous
winners on the web site:

<https://koiorganisationinternational.org/spike-cover-memorial-awards>

Friendship Trophies!



- K.O.I. is Happy to support your club's
Koi Show!
- Request a trophy – email:
pgoulding69@gmail.com!

DO YOU KNOW?

Koi are considered **INVASIVE SPECIES** in several states!
It is illegal **NATIONWIDE** to release Koi into
local rivers, ponds or lakes.



TIP OF THE MONTH

**What To Do - If you have extra Koi
from a spawn in your pond?**

Many Koi Clubs have a Koi Rescue Service
• Check out the Koi Web Site:

- For a list of ALL Koi Clubs
 - For a list of K.O.I. Member Clubs
- DO NOT RELEASE!**

<https://koiorganisationinternational.org/member-clubs-page>

INLAND KOI

Quality Japanese Koi
& Pond Supply



Importers of high quality
Japanese koi.
Complete line of koi &
pond supplies.

Check out our New
Arrivals page
Shop our Featured
Products
Research all of your
Koi Questions

18122 Mt. Washington St.
Fountain Valley CA 92708

Winter Hours:
Daily 10:30am-5:00pm
Monday - Saturday.



Phone: (714) 438-0087
Website: www.inlandkoi.com
E-mail: inlandkoi@inlandkoi.com

THE BEST QUALITY
Japanese Koi
AT A REASONABLE PRICE!

Closed on Sundays



Thank you to **Chien Lee**
of **Nijikawa USA** and to
Iva Gaglione of **Ultra**
Balance for supplying the
Inland Koi Society with a
supply of nutritional koi
food for its rehoming
program!!!



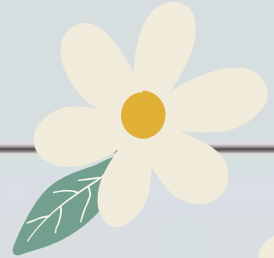
HAPPY FATHER'S Day





INLAND KOI SOCIETY
5198 ARLINGTON AVE., #146
RIVERSIDE, CA 92504

Return Service Requested



Visit Our Website: www.inlandkoi.com