

The Inland Koi Connection



THE OFFICIAL
NEWSLETTER
OF IKS
ISSUE 188
FEBRUARY 2012



FEBRUARY

26



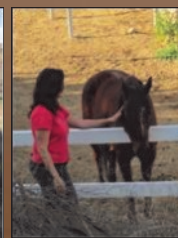
2-5 pm

**General
Meeting**

**at the home of
Jill, Mac,
Sabrina &
Kelly**



**16130 RED PONY LANE
RIVERSIDE, CA 92504
(909) 225-2346**





Our meeting in January was held at the Edward-Dean Museum with a different format from previous years for meetings held there. We were Edward-Dean Museum's guests and they provided a light lunch as a thank you for taking care of the koi pond on their property.

The rules to use the Museum property were changed the first of this year by the Riverside County Board of Supervisors: fees now have to be charged to use their facility and food can not be part of the meetings there. We must also provide an open seminar for anyone to attend. We must do this to be able to use the facility. Orville Hanson did an excellent slide presentation on the many different kinds of filters and outsiders were welcomed to enjoy the presentation.

We were not allowed to conduct the raffle as we normally do them at our meetings, so we didn't have one at all. We found out during the meeting that if we change the procedure in the future, by giving out tickets to everyone and having a donation jar available, a raffle would be acceptable.

Mary Leever, who has been handling the coordination of the IKS raffles for many years, is retiring. The club needs a volunteer to take over responsibility for the raffles. Please contact Mac McClain to volunteer your help.

It is always a relief to have the January Koi club meeting in an enclosed facility, never knowing what the weather will be like at this time of the year. Fifty-six members were present at the meeting, and numerous outsiders joined us for the open seminar.

Things to think about:

- ~As the pond water warms up – disease pathogens become more active
- ~Make sure the bottom of the pond is clean
- ~Make sure the filter is cleaned of build up
- ~Make water and feeding changes gradually

I am looking forward to this month's meeting at Mac and Jill McClain's and looking forward seeing you there.

Dennis Lynaugh

Dennis Lynaugh - IKS President

Board of Directors	Inside This Issue	
<u>PRESIDENT:</u> DENNIS LYNAUGH (951) 780-0123 dlynaugh@pacbell.net	•Oval Pond •Board Members •Help Line	2
<u>VICE PRESIDENT:</u> MAC MCCLAIN (909) 225-2346 jmksmcclain@gmail.com	•February Host & Pond Profile •Direction & Maps	3
<u>SECRETARY:</u> PEGGY MILFELD (951) 780-7395 milfeld@msn.com	•Spring Pond Tips •Ray Jordon, AKCA Koi Health Advisor Shares	4
<u>TREASURER:</u> SANDY HANSON (951) 682-3107 hanson_sandy@yahoo.com	•Secretary Notes •Harrison's Koi Farm •Koi Identification	5/6
<u>NEWSLETTER EDITOR:</u> DEBBY LEVERETT (951) 781-3887 jenniferd11950@hotmail.com	•Inland Koi, Quality Japanese Koi •Welcome •Dangers of Chlorine •Know Your Water	7/8
<u>DIRECTOR:</u> BOB HENRY (909) 783-2373 bigoldgiantbob@sbcglobal.net	•KrakTronix Technical Services •Laguna Koi •Printing Connection •Advertising Prices	9
<u>DIRECTOR:</u> PATRICIA HURLEY (951) 845-0855 sparrowhawks@verizon.net	•AKCA News •Library Corner •IKS Needs	10
<u>DIRECTOR:</u> ED KUSHNER (951) 520-0092 edkushner@msn.com	•Calendar / Events •For Your Info. •What's Happening	11
<u>DIRECTOR:</u> MARK KRAKOWER (951) 371-2223 kraktronix@sbcglobal.net	•Host Home Pictures	12
<u>DIRECTOR:</u> NICK MILFELD (951) 780-7395 milfeld@msn.com		
<u>DIRECTOR:</u> REY QUIRONG (951) 660-1475 qrejoyz@yahoo.com		
<u>DIRECTOR:</u> PENDING		

~HELP LINE~		REFERENCES
• INFORMATION:	JACK MARRIN	(909) 792-3603
• KOI HEALTH:	TOM WRIGHT	(951) 637-5479
• LIBRARIAN: Books, Videos	REY QUIRONG	(951) 6601475
• MEETING SITES:	MAC MCCLAIN	(909) 225-2346
• MEMBERSHIP:	TEE WRIGHT	(951) 637-5479
• NEWSLETTER ADS:	DEBBY LEVERETT	(951) 781-3887
• AKCA REPRESENTATIVE:	MAC MCCLAIN	(909) 225-2346

Mac, Jill and their two girls are our hosts for this coming meeting. Their beautiful home is located in a secluded ranch, with three acres, off of Mockingbird Canyon in the southwest hills of Riverside. Their land is cross-fenced for horses and they have four. The previous owner of the house had 10 to 12 race horses, so most of the fencing and stalls were already built. With the help of their daughters, the family keeps very clean and organized areas. Beyond the pastures there are some outbuildings they call their town, with each building having a name like the "Saloon," "Post Office" and "General Store"; all the signs were created by Sabrina. Most of these buildings serve as storage for saddles, hay and feed for the animals, but some of them house their chickens, roosters, ducks, white pigeons and a recently added colorful peacock. Mac has one building that serves as his "Man Cave," but actually, it is a very nice office!

Mac and Jill were married in 1994 and they have two wonderful daughters, Kelly (15) and Sabrina (11). Kelly is in the 9th grade and plays football and basketball for King High School. Sabrina is in the 6th grade. She was in a play at their church this past Christmas, likes to play volleyball when the season is here, and she loves to read...like her father. Both girls are a big help in the household, Jill says, because Kelly likes to cook and Sabrina likes to organize.

Mac is retired from law enforcement and currently is President of the Marine Honor Guard at the Riverside National Cemetery. Honor Guards provide dignified displays of military honors during graveside services for veterans. He is also quite a reader and collector of books, as you will be able to see in their library, along with lots of photos on the walls. Jill works for the Federal Courts as a Deputy Chief, traveling three days a week to Los Angeles and two days a week staying closer to home. They both have an appreciation for good food and fine wine; they have even made and bottled their own, from crushing grapes to bottling and putting on their personal name labels.

Mac is a new member of our Board of Directors; he was elected our Vice President in November. He is responsible for meeting locations and speakers. I am happy to say he has almost a full year of commitments for both meeting sites and speakers.

Their pond has two bottom drains and a skimmer. A ½ hp Wave II pump feeds pond water back to a pressurized Microstrainer prefilter. The water is fed into a bubble bead filter, then through four 40-watt UV sterilizers (that equals a total of 160 watts), and finally to a waterfall set into a six-foot-high bank. All the pumps and filters are from Wm Lim. The pond is constructed of an EDPM rubber liner. They built this pond right off the dining area at the back of their house, so they could see the pond while eating. It is about four feet deep, holds 4,000 gallons, and was built after they moved here by Jim Thompson of Waterscape Designs. Of their 27 koi, nine came from their previous home in Moreno Valley and Mac recently picked up a *Sanke* from Gene Maingot.

Mack, Jill, and the girls make a very strong and loving family unit. In fact, their property is named "3 Angels Ranch"; Mac explained the idea came from the original Charlie's Angels TV show. That equates Jill, Kelly and Sabrina as "Mac's Angels."

February is a good month for Mac and Jill to host a meeting because their special family reminds me of a quote I heard by

J. Nehru: "We live in a wonderful world that is full of beauty, charm and adventure. There is no end to the adventures that we can have if only we seek them with our eyes open." These generous people are welcoming us with cordial warmth and friendship. Come meet our Host family and you will savor the experience of making the time more vivid and memorable with your presence.

Dress according to the weather demands, bring a dish to share in the usual potluck, and don't forget your chairs. Look for someone one you don't know yet and get acquainted. The more you come, the more familiar faces you'll find. If you do not have a name tag yet, check at the registration table. If you have any questions, write them down on a question form when you sign in and they will be discussed sometime during the meeting.

Our Program will be "How to Pick and Choose Fish," by **Burt Ballou**. Back in 1968, he visited a koi dealer in Gardena, searching for a goldfish for the pond he was building.

"The dealer said, 'You don't want a goldfish pond. You want a Koi pond,' Ballou says, 'I said, 'What's Koi?' So, he gave me a Shusui koi as a gift. That's how I got hooked."

Nearly 40 years later, Ballou still has the same Shusui koi. While dogs, cats and other pets may live for only a decade or so, koi – and the hobby of raising them – can last generations.

You won't want to miss this presentation or educating program.

~Debby & Larry Leverett

♦ From 91 Fwy, exit on **VAN BUREN BLVD** heading south.

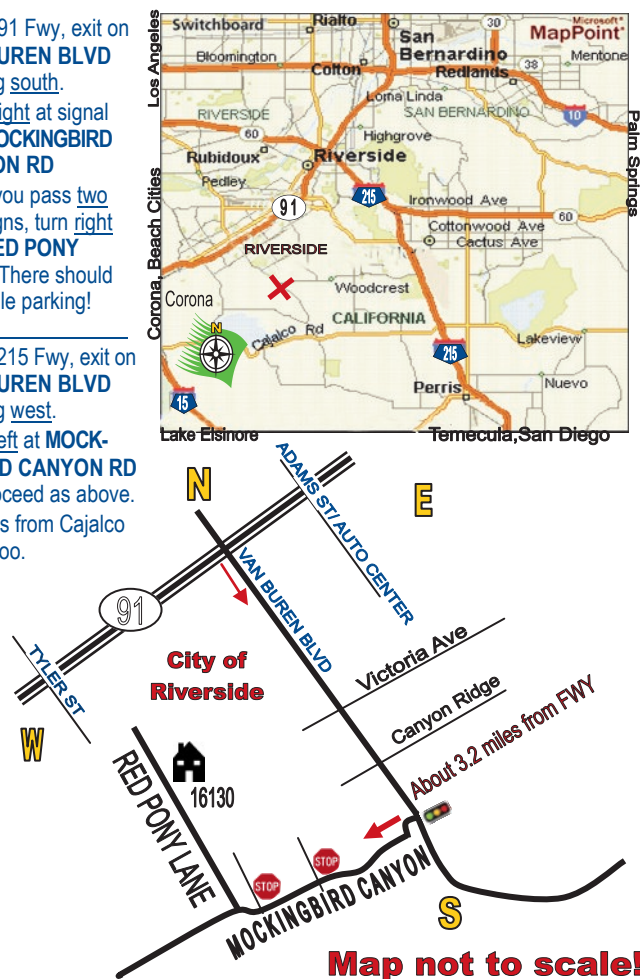
♦ Turn **right** at signal onto **MOCKINGBIRD CANYON RD**

♦ After you pass **two** stop signs, turn **right** onto **RED PONY LANE**. There should be ample parking!

♦ From 215 Fwy, exit on **VAN BUREN BLVD** heading west.

♦ Turn **left** at **MOCKINGBIRD CANYON RD** and proceed as above.

♦ Access from Cajalco Road, too.





SPRING POND TIPS

By Ray Jordan - 2005



It is hard to believe that spring is almost here. Soon our pond's water temperature will be **staying above 60°** and our fish will become more active. Let's all hope that the mild winter will help our fishy friends have a happy and healthy 2012.

Here are some suggestions that will hopefully help you get your pond off to a trouble-free start this spring:

1. Start with a clean pond:

Remove leaves and any sludge that might have accumulated this winter. **Never** stir up the muck in your pond with fish still in the same water. Use a holding tank. It is especially important to remove any acorns that might have fallen into your pond as they can be toxic in large quantities. After cleaning, if possible, cover your pond with netting to prevent any trees' spring leaf-drop from adding more junk back into your pond.

2. Continue to do regular water testing and water changes:

Remember your pond's biological filtration will lag behind your feeding schedule. Also, ammonia-fixing bacteria develop faster than nitrite-fixing bacteria. Test your water for both ammonia and nitrites. Make water changes as often as necessary to keep tests within normal levels. It is better to feed smaller amounts of food several times a day than one large feeding.

3. Watch water temperatures:

You can increase the number and amount of fish feedings as water temperature rises. A suggestion would be to increase the amount of food very slowly, watching your water testing, and feeding small amounts several times a day until the temperature stays above 75°. Try to feed between 9:00am and 5:00pm so the fish have a better chance to digest the food before

the pond temperature drops at night. *If there is a significant cold front that greatly lowers the water temperature, reduce or stop your feeding temporarily.*

4. You should be feeding a lower protein food such as wheat germ:

It is also a very good idea to add extra Vitamin C to your fish food. Buy Vitamin C powder at a health food store and dissolve 1 tsp. in a small amount of warm water for every one to two pounds of food. Stir into food until absorbed, spread out on something to dry, and keep in a cool, dry, air-tight container.

5. Watch your fish carefully:

Look for any that do not swim or eat with the other fish, or that start flashing (rub themselves against the sides of the pond). On very cold days they will be very slow or inactive but they should act similar. Watch for cuts or sores that might develop. These will not heal well in water below 75°, and when we get a few days of warmer temperatures the bad bugs can wake up and cause big problems. You should disinfect any significant scratches with iodine or mercurochrome. If your fish start flashing excessively, find out what is happening and treat it. If high ammonia or nitrites, do a water change and reduce or stop feeding. If parasites are the problem use appropriate treatment. Use a microscope to identify exactly what you are dealing with, and also to confirm, after treatment, that the problem has been eradicated.

6. Move sick or injured fish to heated/salted hospital tank:

Remember, a koi's immune system is temperature dependent. After they recover, you can put them back into the pond.

7. Salt Treatment:

I highly recommend a salt treatment

for your pond each spring, especially if you have had any problems with ulcers or fin rot the previous year. You will have to remove any plants to a separate container for 3-4 weeks. Add 5 lbs. **non-iodized** salt per 100 gallons of water. Split the treatment into three parts and add over three days.

For example, if you had a 1,000-gallon pond, you would need to add 50# of salt. You would add it, approximately 16-17# per day, for three days. You would maintain this salt concentration for two weeks, which means you would need to add salt with every water change. For example, if you did a 100-gallon water change, you would need to add back 5# of salt. Do not put this salty water on your garden or yard if it has been very dry, unless you first dilute it with additional tap water.

After the two weeks, you can increase your water changes to 20% to 30% per day. After one to two more weeks the level of salt will be almost nothing and you can reintroduce your plants. Total time from start to finish is 3-4 weeks. It is best to do this right now as salt slows down the maturing of your biological filter. And if you start feeding a lot, you will need to do bigger water changes and replace more salt.

► Read and learn more about how to care for the special needs of your pond during the end-of-winter and beginning-of-spring season. The club library is a great place to start. The more effective you are in minimizing the problems that can occur with the spring warm-up, the fewer problems you will have the rest of the year.

Good Luck and Happy Pondering!!

For all the times we've met at Edward-Dean Museum in Cherry Valley, this was the first time we didn't have to figure out what to prepare that would stay hot or cold on the long drive out there, and Mary didn't have to cart out all her gear for the raffle. The Museum, or more accurately, its director, **Ralana Gurney**, views Inland Koi Society as a partner with the Museum in the care, maintenance and survival of its koi pond, so this month she wanted to show us some appreciation and try opening our meeting up to the public as a seminar. She did all the promotional work, planned a light lunch, and then missed her own party. (Ralana had been sick for a couple of weeks and was finally diagnosed with pneumonia; we pray for her return to health.)

In Ralana's stead was **Maggie Wetherbee**, *Supervisory Curator*, who welcomed us to the Museum, thanked us for our continued interest in the facility, and invited us to enjoy a simple buffet of salads, sandwiches and dips. Round tables were set up in the back of the room for dining, and afterwards everyone moved forward to theater seating for the business of the day.

Leading into a new term, **Larry Leverett** and **Jack Marrin** teamed up to introduce the officers and directors for 2012. **Mac McClain** was installed Vice President for a one-year term. **Ed Kushner**, stepping down from VP because of work and time constraints, and **Patricia Hurley**, our E-DM representative, were installed directors for two-year terms. Jack reminded all that there remains an opening among the Directors and anyone interested in the position should attend a business meeting or speak with one of the officers. All members are welcome at business meetings.

The next big event for IKS will be the 2012 Pond Tour. **Nick Milfeld**, as chairman, announced a planned date of Sunday, June 3, 10am-4pm, with our traditional banquet following. The problem? To date, five members have volunteered their ponds...in Temecula, Corona, Redlands, Lytle Creek and San Bernardino! We cannot do another 100-mile loop as we did in 2001! We are hoping to identify six ponds in a reasonably tight area within the next month so plans can go forward; much must be done well in advance for us to promote a tour in the print media. We would also like to try to plan a special and separate day for volunteers and pond hosts to visit the various sites.

Reading is becoming a favorite hobby for **Rey Quirong**, our Librarian. Rey volunteered to... agreed to... give an oral book report each month as a way to increase interest in the resources hiding in the IKS Library, and it's making an educated man of him: he's beginning to speak "Koi" with the best of them! His chosen text this month was *Manual of Koi Health* by Keith Holmes and Tony Pitham. With four sections covering disease prevention, essential skills, koi diseases, and treatments, Rey focused on the **three key causes of disease: STRESS, WATER QUALITY, and IMPROPER NOURISHMENT**. •**Overcrowding** stresses the immune system, allowing invasion by pathogenic organisms which can damage koi skin tissues. Load standards allow twenty 12" koi in a 2000-gallon pond, but we must remember that our koi grow, while our ponds do not! •**Over-handling** also stresses koi: simply dropping a net into the water causes a hormone release, much like our adrenaline kicking in when in fight-or-flight mode, a stressor to heart muscles. •We maintain water quality with **proper filtration** and **properly working equipment**; by **regular testing** for ammonia, nitrates and nitrites; and by making the necessary **water changes** to keep water chemistry at acceptable levels. •Koi **nourishment**—totally under our control—is directly related to water temperatures. Just as temperatures change gradually, so the changes in diet should be made gradually: in cold-water, 48°F or lower, koi should not be fed; at 55°F they can be fed sparingly with simple wheat-germ or brown bread; and by 68°F they can be back on a regular diet of commercial koi foods. •**Kudos** for an exceptional report, Rey, and all without notes!

Announcements ended our part of the meeting so we could welcome the public. •**VP Mac** asked for volunteers to fill out his program planning calendar for the rest of the year. He is looking for hosts for June and July, speakers for June and September, and a raffle coordinator to replace Mary, who has been forced to retire from the job. •**Bob Henry** challenged more

members to volunteer as blood donors. We had 27 donations in 2011 (24 are required annually), made by just three people; one of those is deferred for this year, and one was not even a member of the club! Whole blood can be given every two months; plasma, every month; and platelets as often as every seven days, but only 24 times a year. •**Paul Atkiss**, a member of both the IKS and KCSD, invited all to attend the 25th Annual San Diego Koi Show, scheduled February 25-26. Several of our members hold a second membership in San Diego, and many have shown koi and won top prizes there.

The public seminar by **Orville Hanson** did draw people from outside the club, and gave us the pleasure of adding **Robert & Yvonne Kounang** of Redlands, and **Audrey Rowland** of Riverside, to our membership. Others responded with praise for the in-depth coverage of a very difficult subject. The presentation was a power-point race through no less than 16 different designs for filtration systems that could be applied to koi ponds to provide the desired 'crystal clear' water. Hidden somewhere within the mix was "**The Perfect Koi Pond Filter System**" for every pond represented in the room! Not only were the systems illustrated—direct from myriad catalogues—but the pros and cons of each were listed and their functions discussed. A range of prices from various manufacturers were presented, along with attendant costs for installation and operation, so a savvy buyer could comparison shop...and question any system as it was presented. Awesome!

I didn't know there were that many ways to filter water! Before Orville lost me in the plumbing, he qualified "perfect." So, just how do you judge the "perfect" system? *Perfection will...*
 ...maintain ammonia, nitrites at near zero year 'round, with low nitrate levels.
 ...provide adequate oxygen for your fish.
 ...provide clear water for maximum enjoyment of your koi.
 ...be reliable and easy to maintain.
 ...come at a cost within your budget.

Perfection is achieved through a process of cleaning the water mechanically and biologically, then polishing it to crystal clearness. If you had to miss this fascinating talk, or if you would just like to review it at a slower pace, I believe Orville made a few CD copies for the Library; check one out.

Orville spoke with ease of each system, knowing them all inside and out, and pointed out that a major problem exists in the pond industry: there is lack of standards for sizes, flow rates, etc., in the way manufacturers 'sell' their products. This was especially evident in the maximum flow rates quoted for sterilization by UV lights. "It's all physics," said Orville. "If one rate is true, all the others are necessarily false. And nobody lies on the low side." He noted that as we consider UV applications, we should remember that for the UV to work, the entire pond volume should pass through the unit in two hours because the bacteria will double in number in three hours!

Now Orville must have expected some of us to be overwhelmed by the depth and detail of his presentation, so he inserted a "Koi Photo ID" quiz at intervals throughout. One by one, between the filter systems, photos of 20 different varieties of koi popped up for instant ID. **Sandy Hanson** put the quiz together with photos from the Inland Koi website and provided for two levels of play: a NOVICE answer sheet listed the named varieties, each with a blank on which to enter the number of the photo presumed to be right; an EXPERT answer sheet simply had numbered blanks on which to write each variety's name. Correct answer scrolls on the screen at the end of the presentation. No prizes were offered, just "bragging rights" in the club!

Respectfully submitted,
 ~Peggy Milfeld, Secretary



HARRISON'S

KOI
FARM

POND KOI • SHOW QUALITY KOI
2000 KOI on display from 3" to 30"

Specializing in hard to find varieties

- KOI FOOD
- SUPPLIES
- EQUIPMENT
- CONSULTATION


Terry & Koren Harrison
5580 / 5582 Rio Road
Riverside, CA 92509

(951) 369-9998



QUIZ: KOI PHOTO ID

In case you missed last month's meeting—or if you were there and too engrossed in Orville's presentation to pay attention to photos of koi that kept popping up between the filter systems—we have put together a mini quiz to test your expertise in naming koi varieties. Orville gave us only a few seconds to see and ID the fish, to have its image impress itself on a mind already overloaded with technical jargon, and to translate that to a named variety we could identify on paper.

Here, you may take all the time you want; you may even cheat once you are stumped. Numbered photos have blank lines on which to write the variety name...the Expert level. Fill in what you can, then check the list of names at the bottom of the page for ones you have missed. OR, match the listed names to the photos and fill in the blanks...the Novice level. Somewhere in the Newsletter you should find a list of answers against which to check yourself. We'll go easy the first round!



1. _____



2. _____



3. _____



4. _____



5. _____



6. _____



7. _____



8. _____



9. _____



10. _____

Budo Goromo
Gin Matsuba
Gin Rin Ochiba Shigure
Hajiro
Hi Utsuri

Kujaku
Lemon Hariwake
Sanke
Showa
Yamabuki Ogon

UNDERSTANDING THE DANGERS OF CHLORINE IN KOI PONDS

Adapted from WaterGardenNews.com

Consider how carefully we monitor water quality in our ponds: we test for ammonia, nitrates and nitrites; we treat as necessary; and we proactively make regular water changes. But, in our efforts to provide the optimum environment for our koi, are we as careful to monitor the quality of the water we add as we are the water we remove?

Hobbyists and pros alike argue the importance of watching the level of chlorine in the pond and how harmful chlorine levels can be to all aquatic life—not just to our koi, but to other pond fish, dragonfly larvae, frogs, etc. One experience of casually making a partial water change without knowing what the water company has used in treating the water can be an error with devastating consequences. Consider these fundamental facts about chlorine and your pond system:

- Concentrated levels of chlorine can kill fish and other life forms.
- Chlorine is an oxidizer which removes the necessary slime coat from koi and other fish, causing stress and stress-related illnesses.
- Chlorine damages the gill structure in fish, causing serious long-term issues and making it difficult for the fish to breathe.
- When exposed to high levels of chlorine, koi show signs of irritation, such as swimming erratically or jumping above the water.
- As the pond's pH levels go down, chlorine becomes more toxic.
- Phenols, toxic organic chemicals found in some types of organic wastes, can combine with chlorine to become extremely toxic.

Looking for your koi to react is not the solution, either. While they may show no apparent ill effects from untreated water, their delicate tissues may still be stressed and harmed. The degree of damage depends on many factors, not the least of which is the actual concentration of the chlorine. At low levels, chlorine is not necessarily life-threatening to koi, but it still can harm them: the affected fish may exhibit fast gill beats or gasp at the water surface to get enough oxygen into their tissues. These symptoms easily can be mistaken for low-oxygen problems, gill parasites or another gill disease, when raw tap water might be to blame. Here are examples of chlorine levels and what they can do to pond fish:

- .006 mg/L will kill fish fry in about two days.
- .003 mg/L will kill insect larvae, such as dragonflies.
- .002 mg/L will fatally damage sensitive skin on tadpoles, frogs.
- .01 mg/L is the maximum experts say adult koi can tolerate.
- .25 mg/L is the level at which only the hardiest koi can survive.
- .37 mg/L is the level at which all pond fish will die.

On the other hand, there are reasonable advantages for the pond owner to the use of chlorine, but they are disadvantages to the water company:

- Chlorine is relatively unstable in water; it breaks down quickly when exposed to air and escapes readily into the atmosphere.
- Spraying water into the pond or over a rushing waterfall in a water change will allow the chlorine to dissipate.
- Water left sitting with adequate water circulation will be free of chlorine in 24 hours or less.
- Sodium thiosulfate easily neutralizes chlorine.

Because it dissipates quickly, chlorine treatment becomes less efficient. Another concern is that it can combine with certain or-

ganics (which may be in your water) to form trihalomethanes, a family of carcinogens. Many water treatment facilities have switched from using chlorine to using chloramines.

React to any suspicion that chlorine may be causing damage to your fish by increasing aeration in the pond for a few days. This will improve the chances of their recovery. The next response and the proper solution is to treat the problem chemically. Water treatment chemicals typically cost pennies per use and will safely remove chlorine. But, as with any chemical you buy, read the label to ensure you purchase and use the right product for your need.

In case your water supplier is one that has switched to treating with chloramine instead of chlorine, it will cause you a more significant headache. Chloramine is a compound containing both chlorine and ammonia, and is much more stable than chlorine. The chlorine-neutralizing chemicals you might choose, such as sodium thiosulfate, will only neutralize the chlorine portion of chloramine, neglecting—or causing—an even bigger problem. Without treating both sides of the chloramine compound, you risk a deadly spike in ammonia levels, which can be devastating to your koi and any other pond fish. Your pond's biological filter will eventually convert the ammonia to nitrate, but the time it takes may be longer than your fish can tolerate. As noted before, they may already be stressed and their gills may be damaged by the chlorine. Beyond that, the initial presence of the chlorine may have done irreparable damage to the biological filter, rendering it useless.

Nothing is more devastating to the koi keeper than suffering a preventable loss of these beautiful creatures. No one is ever prepared for the heart-heavy task of netting and disposing of dead fish. Rather, we prepare NOT to have to face such a situation by keeping our own "pond pharmacies" with the necessary products and the knowledge of how to use them. Have on hand the tools to measure and mix and written guidelines for reference. Know the volume of your system and the accurate dosages needed for every treatment you might employ.

Even with a chemical arsenal on hand and a working knowledge of what to do and how to do it, you will not really be prepared until you know what treatment method your water provider is using. Do the research, make the call. Then test your water for all the dangers. A standard pond test kit will give you an indication of chlorine levels expressed in a range of colors, but it will not give anything near an accurate reading; a chlorine meter with an electronic readout can give the precise measurement.

**KNOW
YOUR
WATER!**



INLAND KOI

Quality Japanese Koi
& Pond Supply



Importers of high quality
Japanese koi.
Complete line of koi &
pond supplies.

Our recent shipment
of Japanese Koi
is looking good.
INLAND KOI
Come and see them!

10000 Indiana Ave., Ste #7
Riverside CA 92503
(951) 352-5128

Store Hours: Mon-Sat 10:00-5:00
Sun 10:00-4:00



Phone: (951) 352-5128

Email: inlandkoi@inlandkoi.com

THE BEST QUALITY
Japanese Koi
AT A REASONABLE PRICE!

WELCOME

NEW MEMBERS	CITY	JOINED
ROBERT & YVONNE KOUNANG	REDLANDS	01 - 12
AUDREY ROWLAND	RIVERSIDE	01 - 12
BRUCE & LYN LIBY	YORBA LINDA	12 - 11
CARLOS & ROSANN ROZZI	RIVERSIDE	10 - 11

**IKS HOPES YOU ENJOY A FUN AND
INFORMATIVE ASSOCIATION WITH OUR CLUB! FOR EXTRA
HELP, QUESTIONS, OR INFORMATION, BE SURE TO REFER
TO THE 'HELP LINE' ON PAGE TWO.**

A REMINDER: When your koi start moving around a little and the days get warmer, think about composing pictures of your Jewels to enter into the yearly "Koi of the Year" contest. Your koi might be a winner this year.

Like many others, Loma Linda Ronald McDonald House works with local recycling centers to receive money for pull-tabs. Collect-A-Million Day was at University of Redlands, and all those tabs the Inland Koi Society had been collecting for over two years were turned in: **39.8 pounds** in all, or approximately **50,600 tabs** (a pound is about 1265 tabs!) The day usually earns about \$10,000 for LLRMH.

We don't do a good job of recycling at club meetings—tossing our cans and bottles out with the rest of the trash. We should have a place to put both—but we do at least pull the tabs. Many members save them up from home and work and regularly bring little tab-bags to meetings. It took two years to get 50,000; think we can top that by next year? We'll just keep trying!

Remember, **Pull One for Love!**

www.llrmh.org

Peggy Milfeld & Debby Leverett



Look what
IKS Members
**Chuck & Doris
Poppe** sent
from **Virginia!**
RIGHT ON!
Let's keep up
the good work!



Donate blood at LIFESTREAM, the new name for the **Blood Bank** of San Bernardino and Riverside Counties.
4006 Van Buren Boulevard, Riverside (951) 687-2530 / www.LStream.org

If we maintain 24 donations a year, all members of the club, including spouses and dependent children, whether they have donated personally or not, will be able to receive blood without charge (if their insurance doesn't cover the cost of the blood products). "Blood products" does not include blood testing or other blood-related hospital charges; it includes only the cost of the product itself that is used.

Bob Henry was the one who established our donor group. It only takes a few donors to satisfy the requirements—Bob could do it on his own!—but we would hope that many members would get involved as new donors this year to help the community at large and to benefit the club. It's a little thing with a huge pay-off, as anyone who has been in desperate need of transfusion can attest.



KrakTronix Technical Services
 LASER PRINTER SERVICE
 REMANUFACTURED TONER CARTRIDGES
 ALL TONER / INK NEEDS
 HP AUTHORIZED

MARK KRAKOWER

501 N. Smith Ave. • Suite 110 • Corona, CA 92880
 (951) 735-9996 • (951) 2782849 Fax
 email: kraktronix@sbcglobal.net • www.kraktronix.com

HINT...

Renewal forms were sent along with the October Inland Koi Connection (IKS Newsletter) in 2011. If you misplaced your copy and would still like to be a member, print a copy from website www.inlandkoi.org and mail that along with your check to our Treasurer, Sandy Hanson, at 5198 Arlington Ave. #146, Riverside, CA 92504.



LAGUNA KOI PONDS

Ben Polonski

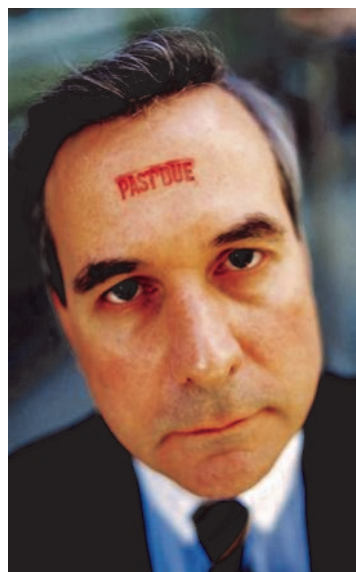
Phone (949) 494-5107
 20452 Laguna Canyon Road, Laguna Beach, CA 92651
 bplonski@lagunakoi.com Fax (909) 494-1679

Jack Cords



20% Off For First Time Customers!

800.491.1964 • 951.351.9437
 printingcolor@yahoo.com • www.printingconnection.net
 11800 Sterling Ave., Suite E • Riverside, CA 92503



Inland Koi Society Membership renewals were due by January 1, 2012

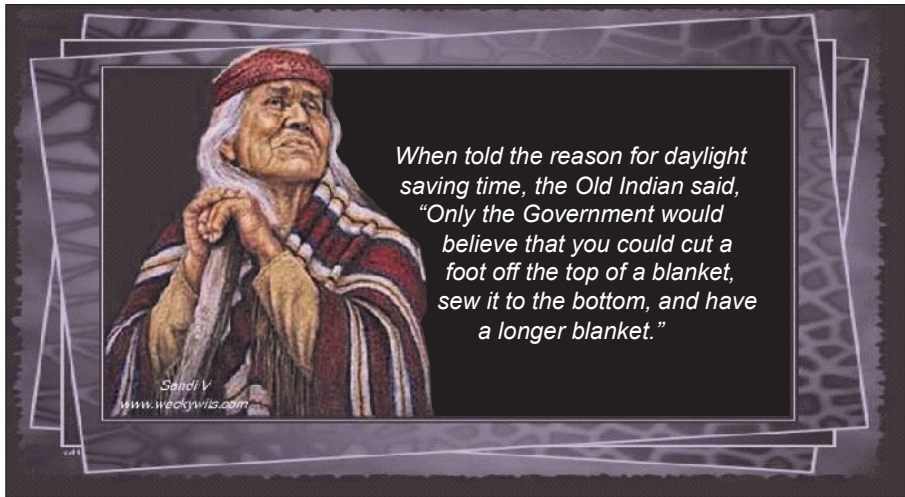
Don't wear this stamp on YOUR head! If you've not sent your renewal in yet, get it in the mail today!!!



Advertising in the Inland Koi Connection includes color & your Ad on our inlandkoi.org website

BUSINESS CARD	\$100 / year
QUARTER-PAGE DISPLAY	\$140 / year
HALF-PAGE DISPLAY	\$275 / year
FULL-PAGE DISPLAY	\$550 / year

Approximately 135 copies of the Inland Koi Connection are printed and mailed ELEVEN times yearly. For more information call Debby, IKS Editor, at (951) 781-3887



The Board of Directors has no ideas yet about where to go on a bus trip this year. These trips are for the enjoyment of IKS Members and we would like some input from those who attend.

We are looking at a trip in October, so if you have any ideas of where to go, please call and discuss them with Mac, our VP and Planning Chairman, (909) 225-2346.

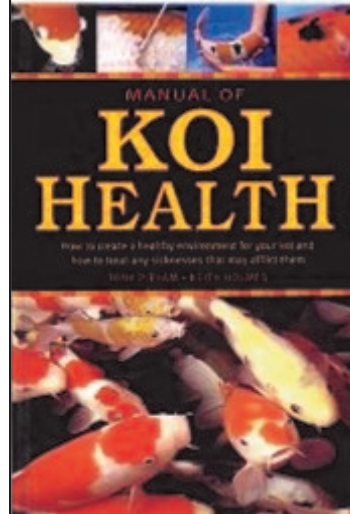


*If someone thinks that love and peace is a cliché that must have been left behind in the Sixties, that's his problem.
Love and peace are eternal. ~John Lennon*

LIBRARY CORNER:

Manual of Koi Health:

Keith Holmes, Tony Pitham



This manual has comprehensive descriptions of all common koi diseases and advice on how to recognize, treat, and prevent them. At the meeting, Rey Quirong, IKS Librarian, will give a brief summary, "part two," of this book from the IKS Library.

Check it out!

Meeting Sites & Speakers

Koi Members: We are looking for another volunteer! We really need someone to coordinate the raffles at our monthly meetings. The IKS Board provides a monthly budget to purchase items for the raffle, and someone is selected to call out the raffle numbers.

The primary responsibility of the coordinator is to purchase the raffle items, bring them to the meetings, and set them up on the table. If anyone is interested in taking on this task, please contact me ASAP. The raffle helps defray monthly costs and is truly one of the highlights of every meeting, but it won't happen without a coordinator.

Don't forget our next meeting will be at my home on Sunday, February 26. Our guest speaker will be **Burt Ballou**, who will be talking on how to pick and choose koi. ~Mac

AKCA News from Mac, our club's AKCA Representative:

- ◆ Larry Iles has been named editor of KOI USA, to replace Joe White, who has resigned. Larry has been in the koi hobby for many years and is well regarded by koi hobbyists. He also brings to the table marketing skills that will help KOI USA grow.
- ◆ Doug Dahl stated that there are 96 active clubs in AKCA as of Jan. 1, 2012.
- ◆ 2012 AKCA Business Meeting/Banquet and KHA Wet Lab to be held in Fresno, June 30-July 1.
- ◆ Please let your AKCA rep/contact know of any concerns your club may have!
- ◆ Is anyone in your club interested in writing an article for KOI USA?

INLAND KOI SOCIETY MONTHLY PLANNING CALENDAR 2012

REGULAR MTG 4th Sunday	HOSTS & City	PROPOSED PROGRAM Speakers	BOARD Wed. after Mtg
February 26	Mac, Jill, Kelly, and Sabrina - Riverside	Bert Ballou - How to pick and choose fish	Feb. 29
March 25	Inland Koi - Riverside Dealer	Jack Chapman - Water quality and spring start up	Mar. 28
April 22	Larry and Debby Leverett - Riverside	Galen Hanson - Disease	April 25
May	No General Meeting	Pond Tour on June 3	May 30
June 24	Steve and Laura Nyirady - Yucaipa	Mark Whalen - Pond pips (Improving Quality of Pond and Fish)	June 27
July 22	Miguel Sierra - Murrieta	Shawn McHenry, Mystic Koi - Topic to be determined	July 25
August 26	Pam Spindola - Santa Ana	Pam Spindola - Slide show	August 29
September 23	Patricia Hurley - Cherry Valley	Spike Cover - Topic to be determined	Sept. 26
October	Bus Trip	Destination - Pending	Pending
November 18	Jerry and Pat Mall - Temecula	Pending	Nov. 28



25th Annual KCS D Koi Show February 25-26, 2012 OUR SILVER ANNIVERSARY



Schedule of Events

Entry of Fish	Friday, Feb. 24 Saturday, Feb. 25	4PM - 8PM 8AM - 9:30PM
Show Open to Public	Saturday, Feb. 25 Sunday, Feb. 26	9:30AM - 4PM 9AM - 3PM
Judging	Saturday, Feb. 25	10AM until completed
Awards Banquet	Saturday, Feb. 25	6PM, Karl Strauss Brewery Restaurant, 9675 Scranton Road, San Diego 92121
Judges Discussion	Sunday, Feb. 26	10AM
Tategoi Judging	Sunday, Feb. 26	11:30AM
Giant Raffle	Sunday, Feb. 26	1PM
Koi Auction	Sunday, Feb. 26	2PM
Close of Show	Sunday, Feb. 26	3PM

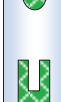
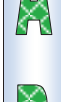
If you would like to enter a fish and experience the fun, please go to our website, www.koiclubsandiego.org, click on registration, and follow the instructions. **Preregistration and fees must be postmarked no later than February 1, 2012.**

2012

FEBRUARY

Coming Events

15	IKS POND TOUR 2012 MEETING ~ 7pm / Nick & Peggy Milfeld's home / 1644 Northhampton Dr., Riverside 92506 / (951) 780-7395
17-19	POMONA HOME & GARDEN SHOW ~ 10am-7pm / Pomona Fairplex, 1101 W McKinley Ave. / These shows always feature displays and exhibits of the latest ideas in home improvement. www.fairplex.com / (909) 623-3111
19	WINTER BIRD FESTIVAL ~10am-3pm / Rancho Santa Ana Botanic Gardens, 15 N. College Ave., Claremont 91711 / (909) 625-8767 / www.rsabg.org
17-26	COUNTY FAIR & NATIONAL DATE FESTIVAL ~ 10am-10pm / Riverside County Fairgrounds, 82 -503 Hwy 111, Indio 92201 / \$6,\$7,\$8 / www.datefest.org / 1-800-811-FAIR
20	PRESIDENTS DAY ~A combined Celebration. The 12th is Lincoln's Birthday, Washington's is the 22nd. 
24-26	KOI CLUB OF SAN DIEGO ~ 25th Annual Koi Show / Activity Center at Del Mar Fairgrounds / See the information on the left.
26	INLAND KOI SOCIETY POTLUCK MEETING ~ 2:00-5:00pm at the McClain's house in Riverside. For more information call (951) 398-7048
29	IKS BUSINESS MEETING ~ 7pm / All members of IKS welcome! — 6531 Box Springs Blvd, Riverside / Dennis Lynaugh (951) 780-0123



03	LIVING HISTORY FLYING DAY ~ 10am / Chino Airport / 700 Merrill Ave., Chino 91710 / Featuring a historically significant aircraft from the rare and unique collection. / (909) 597-3722 www.planesoffame.org
08-10	QUILT, CRAFT, AND SEWING FESTIVAL ~10am-5pm / 1101 West McKinley Ave., Pomona 91768 / www.fairplex.com / (909) 865-4310
09	AKCA BOARD MEETING ~ 6pm / 529 W. Blue-ridge Ave., Orange 92865 / Call Mac at (951) 398-7048 for more information.
11	DAYLIGHT SAVINGS TIME BEGINS ~  <i>Spring forward, Spring forward</i>
14	IKS POND TOUR 2012 MEETING ~ 7pm / Nick & Peggy Milfeld's home / 1644 Northhampton Dr., Riverside 92506 / (951) 780-7395
17	Happy St. Patrick's Day 
17-18	ZNA SO CAL KOI SHOW ~ Gardena Civic Center Complex / 1700 West 162nd St., Gardena 90247 / 9am-5pm, Sat. / 9am-3pm, Sun. / No charge / http://znasocal.org / (818) 207-3238
25	INLAND KOI SOCIETY POTLUCK MEETING ~ 2:00-5:00pm at Inland Koi in Riverside / For more information call (951) 398-7048.
28	IKS BUSINESS MEETING ~ 7 pm / All members of IKS welcome! — 6531 Box Springs Blvd, Riverside / Dennis Lynaugh (951) 780-0123
31-APR	MARINE AQUARIUM EXPO ~ 10am-5pm / Orange County Fairgrounds and Expo Center / 88 Fair Drive, Costa Mesa 92626 / (714) 708-3247 www.marineaquariumexpo.com



INLAND KOI SOCIETY
5198 ARLINGTON AVE., #146
RIVERSIDE, CA 92504

Return Service Requested



Be sure to check out the little town (buildings) in the back, listed with a "pop. of 4."



Visit our website: www.inlandkoiociety.org